

FOR SALE — LAND

15 COLD SPRING ROAD

WHITE CREEK
NEW YORK 12816



PROPERTY DETAILS

FEATURES

Available for sale is ± 11.06 acres of flat, level land in the Washington County Town of White Creek, NY

LOCATION

Route 67 to north on State Route 22. Property at the intersection of State Route 22 and Cold Spring Road

UTILITIES

Well water and septic

ZONING

No municipal zoning

PRICE

For Sale at: \$89,000

ADDITIONAL INFORMATION

Tax ID#: 264.-1-32.1

19 Assessment: \$45,527

Equalization Rate: 63%

20 General Tax: \$2,328.31

19/20 School Tax: \$1,244.82

Combined Tax: \$3,573.13

+ ± 11.06 acre site

+ 4,580 AADT



CONTACT INFORMATION

KYLE RUECKERT

Associate Broker

+1 518 452 2700 x115

Kyle.Rueckert@cbre-albany.com

CRAIG DARBY

Associate Broker

+1 518 452 2700 x107

Craig.Darby@cbre-albany.com

Preliminary

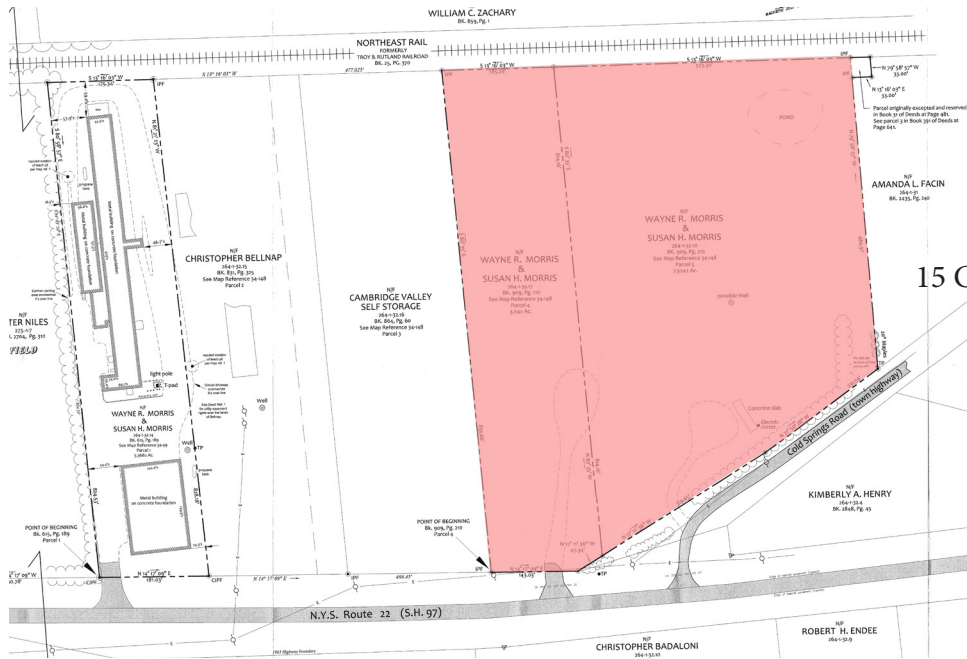
www.cbre.com/Albany

CBRE | Albany

Part of the CBRE affiliate network

FOR SALE 15 COLD SPRING ROAD

WHITE CREEK, NY 12816



15 Cold Spring Road



© 2020 CBRE-Albany This information has been obtained from sources believed reliable. We have not verified it and make no guarantee, warranty or representation about it. Any projections, opinions, assumptions or estimates used are for example only and do not represent the current or future performance of the property. You and your advisors should conduct a careful, independent investigation of the property to determine to your satisfaction the suitability of the property for your needs. Photos herein are the property of their respective owners and use of these images without the express written consent of the owner is prohibited.

210 WASHINGTON AVENUE EXTENSION, SUITE 201 | ALBANY, NY 12203

www.cbre-AlbanyProperties.com

CBRE Albany

Part of the CBRE affiliate network