

# THREE

777 LOWNDES HILL ROAD  
GREENVILLE, SC 29607



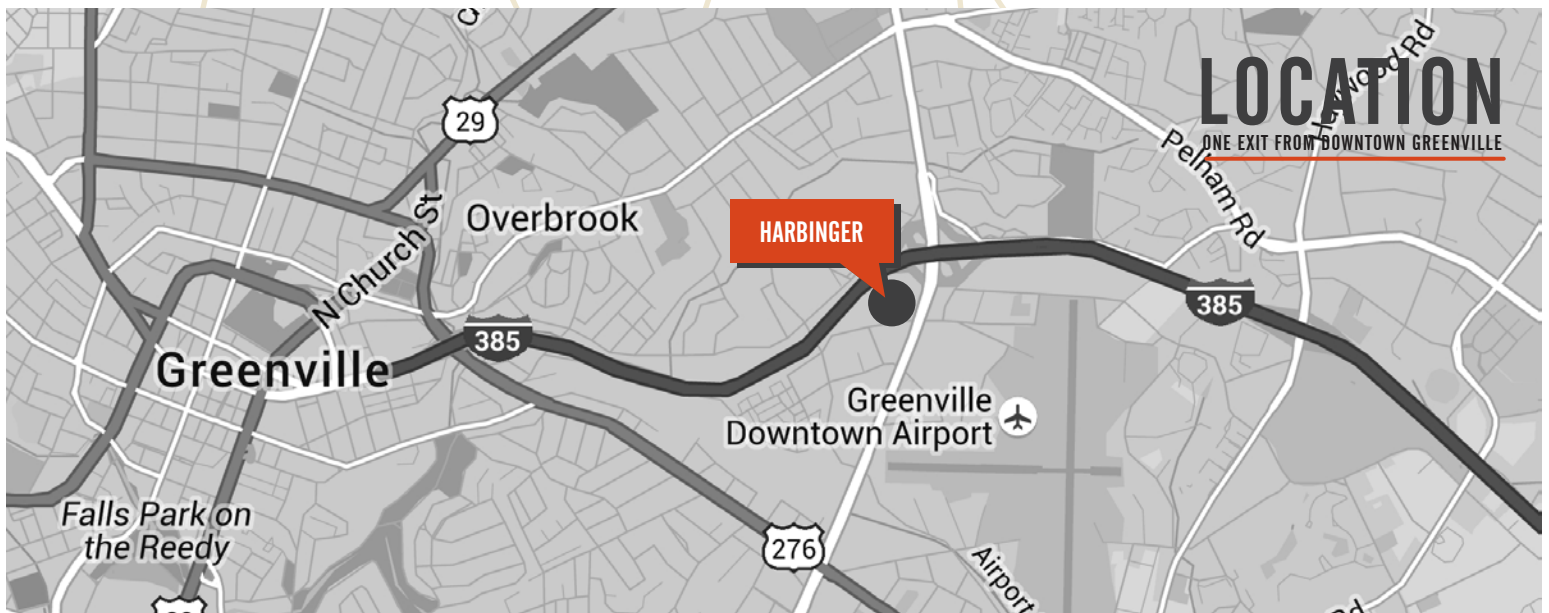
HARBINGER



±705 - ±4,419 RSF AVAILABLE | \$23.00/RSF FULL SERVICE

Harbinger is a fully amenitized, modern day office park that offers tenants a great working environment which results in talent recruitment and retention. This corporate business park is one exit away from Greenville's award winning & vibrant downtown. At Harbinger, you can enjoy proximity to downtown, without downtown prices or parking constraints.

Harbinger offers a professional modern environment with ample parking, interior and exterior upgrades, new signage and way finding, improved landscaping and exterior lighting and enhanced presence along the interstate. On-site amenities include a fitness center, shared meeting space and a central courtyard with campus wifi for all tenants to enjoy.



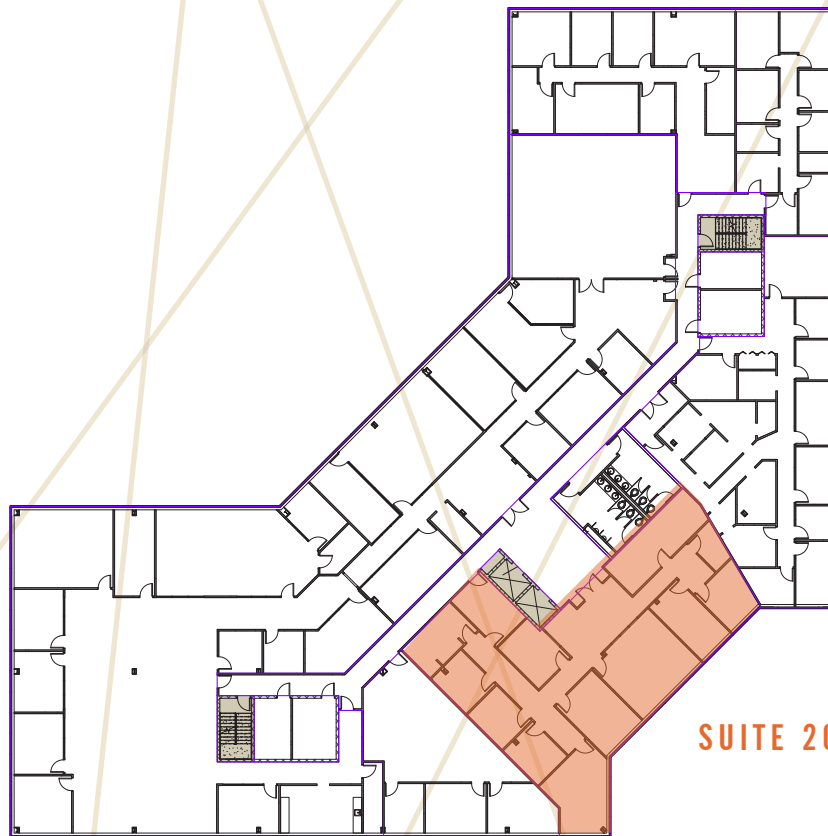


## NEW FITNESS CENTER & CONFERCING SPACE



## SECOND FLOOR

- Suite 200 ±3,714 RSF



SUITE 200 | ±3,714 RSF

Owner:

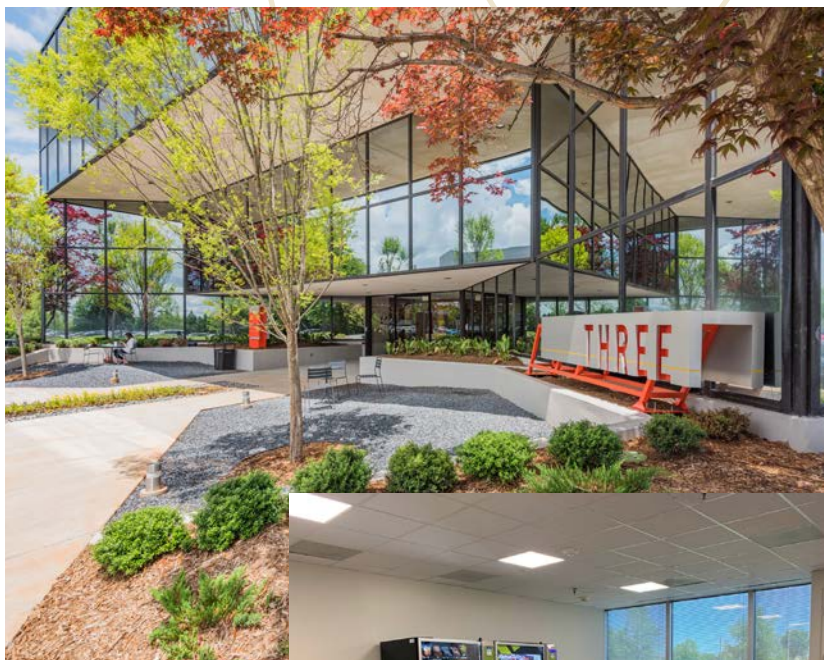


# PROPERTY DETAILS

Building THREE is located inside a  $\pm 160,000$  SF office park minutes from downtown Greenville.

$\pm 705$  RSF - 4,419 RSF Available

- New fitness center, conferencing space & canteen for tenant use
- New digital lobby directory with flat-screens
- New wayfinding to tenant spaces
- Parking ratio: 4.07/1,000 SF
- Highly visible from I-385 & Pleasantburg Drive
- \$23.00/RSF Full Service



NEW CANTEEN

## THIRD FLOOR

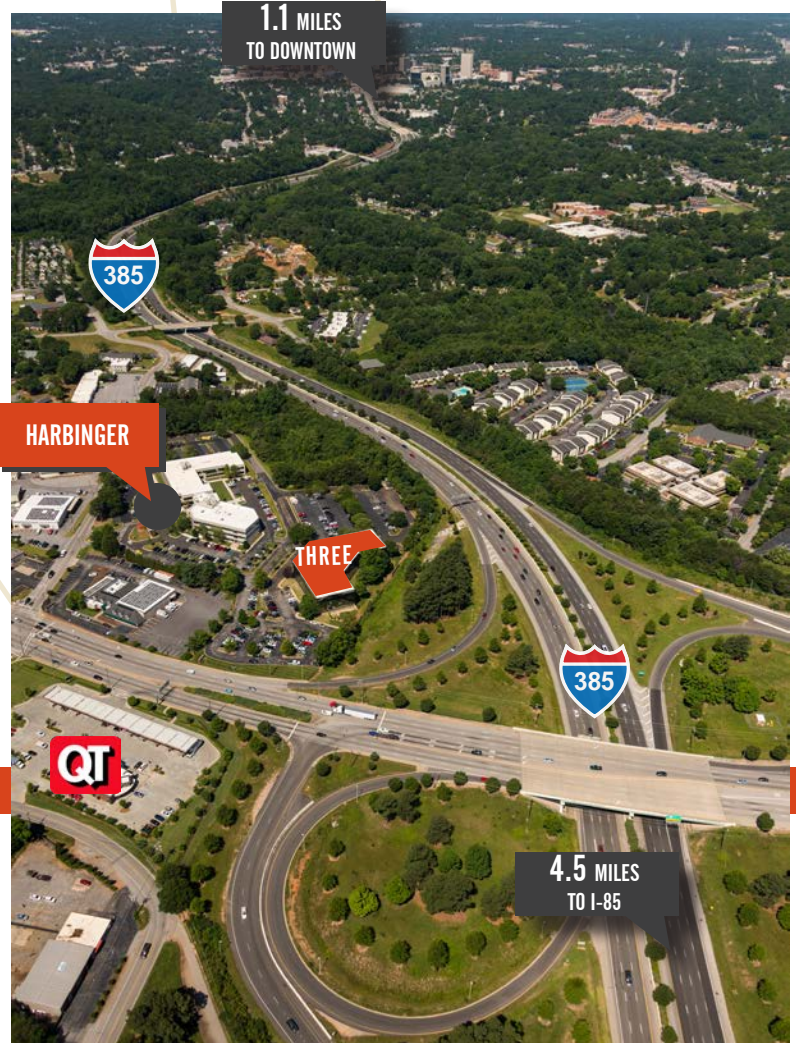
- Suite 327  $\pm 705$  RSF



SUITE 327  
 $\pm 705$  RSF

# THREE

777 LOWNDES HILL ROAD  
GREENVILLE, SC 29607



## CONTACT US:

**SHELBY DODSON, LEED AP**  
+1 864 527 6022  
SHELBY.DODSON@CBRE.COM

**CHARLES GOUCH, CCIM, SIOR**  
+1 864 527 6035  
CHARLES.GOUCH@CBRE.COM

**BLAINE HART, SIOR**  
+1 864 527 6054  
BLAINE.HART@CBRE.COM

Owner:

