

SUITES IMMEDIATELY AVAILABLE

# ONE BIGELOW SQUARE

## DOWNTOWN PITTSBURGH

15219

TOP FLOOR PENTHOUSE OPPORTUNITY



[www.cbre.us/onebigelow](http://www.cbre.us/onebigelow)

**CBRE**

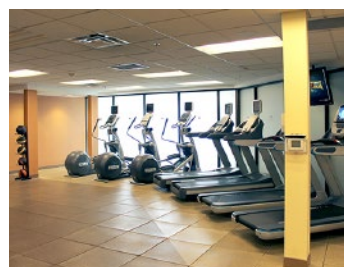
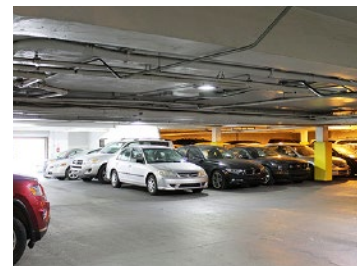
# SUITES IMMEDIATELY AVAILABLE ONE BIGELOW SQUARE

DOWNTOWN  
PITTSBURGH, PA  
15219



## PROPERTY DETAILS

- + Office suites:
  - 1,330 RSF – 20th floor, immediately available
  - 6,500± RSF – 7th floor
  - 2,750 RSF – 7th floor
  - 2,646 RSF – 6th floor
- + Parking in integral garage available
- + Bigelow Grille and 7-Eleven convenience store on-site
- + Close proximity to PPG Paints Arena
- + Easy access to all major highways
- + Tenants will be provided access to hotel amenities including:
  - Pool
  - Fitness center
  - Conference rooms
- + Top Floor Penthouse opportunity includes:
  - Private deck overlooking PPG Paints Arena
  - Private tenant restrooms
  - Dramatic views



## CONTACT US

### PATRICK GREENE

Senior Vice President  
+1 412 471 3017  
pj.greene@cbre.com

### CARMINE DILUCENTE

Vice President  
+1 412 394 9828  
carmine.dilucente@cbre.com

© 2020 CBRE, Inc. All rights reserved. This information has been obtained from sources believed reliable, but has not been verified for accuracy or completeness. You should conduct a careful, independent investigation of the property and verify all information. Any reliance on this information is solely at your own risk. CBRE and the CBRE logo are service marks of CBRE, Inc. All other marks displayed on this document are the property of their respective owners, and the use of such logos does not imply any affiliation with or endorsement of CBRE. Photos herein are the property of their respective owners. Use of these images without the express written consent of the owner is prohibited.